

ELECTRIC OPERATED DELUGE VALVE



PRODUCT DESCRIPTION

Electric operated Deluge valve model is a weir-type hydraulic valve, activated automatically or manually.

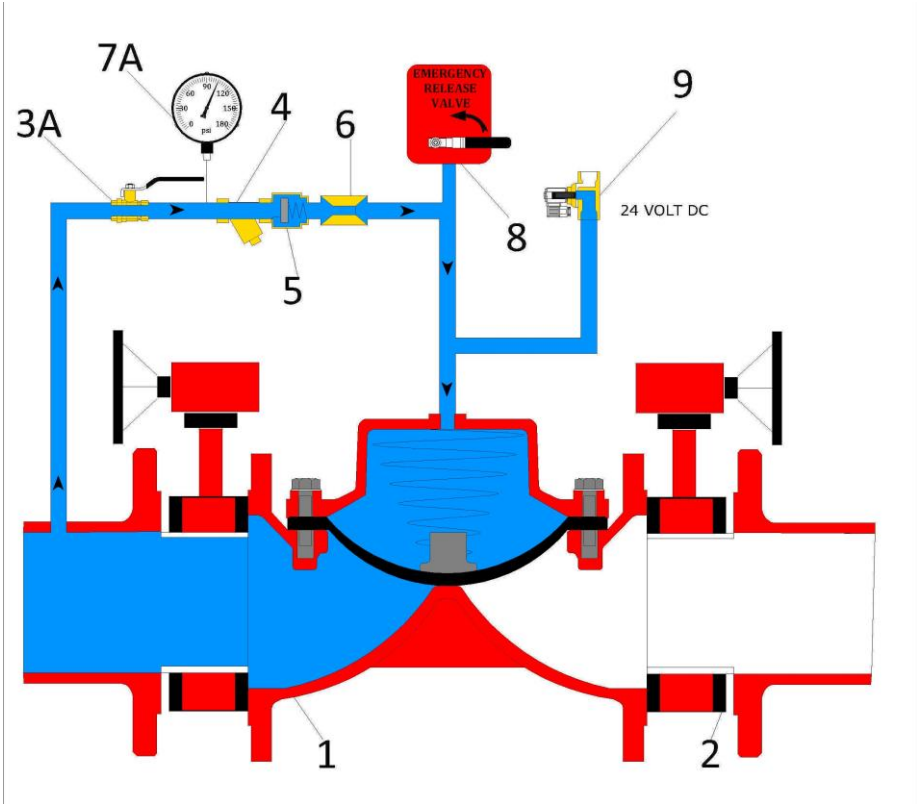
The valve is mounted on the upstream side of a fire-extinguishing sprinkler system, preventing flow into the system at its "Ready" position.

PRODUCT FEATURES

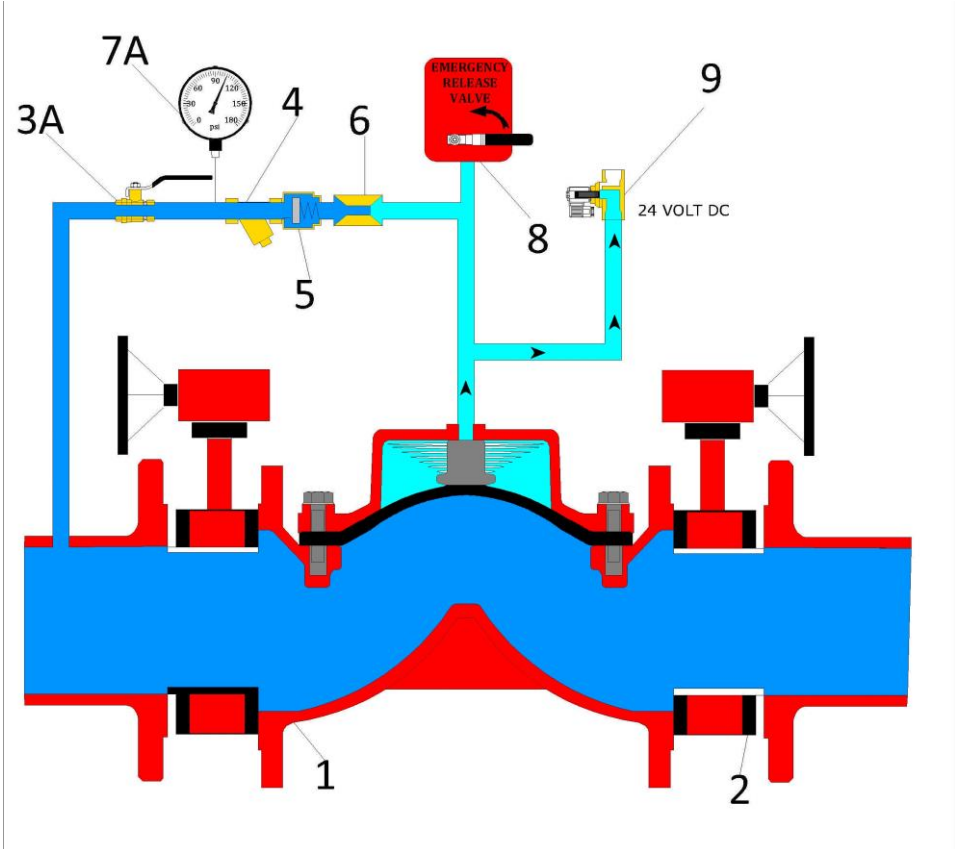
1. The valve opens instantly when an electric signal, by means of continuous current, is applied to a solenoid valve.
2. Stoppage of the electric signal will enable re-closure of the valve after the upstream separation valve is closed.
3. In the case of failure of the automatic activation system, manual emergency activation is possible.
4. A downstream outlet, which is an integral part of the main valve control trim, can be connected to a hydraulic alarm bell (not supplied by the factory).
5. (1/2") screen filter is assembled on the pressure line which supplies the main valve control trim and the detection system, to ensure clean operating water preventing clogging.
6. In case of a temporary decrease in the inlet pressure, the main valve will remain in the closed position

OPERATION MODES

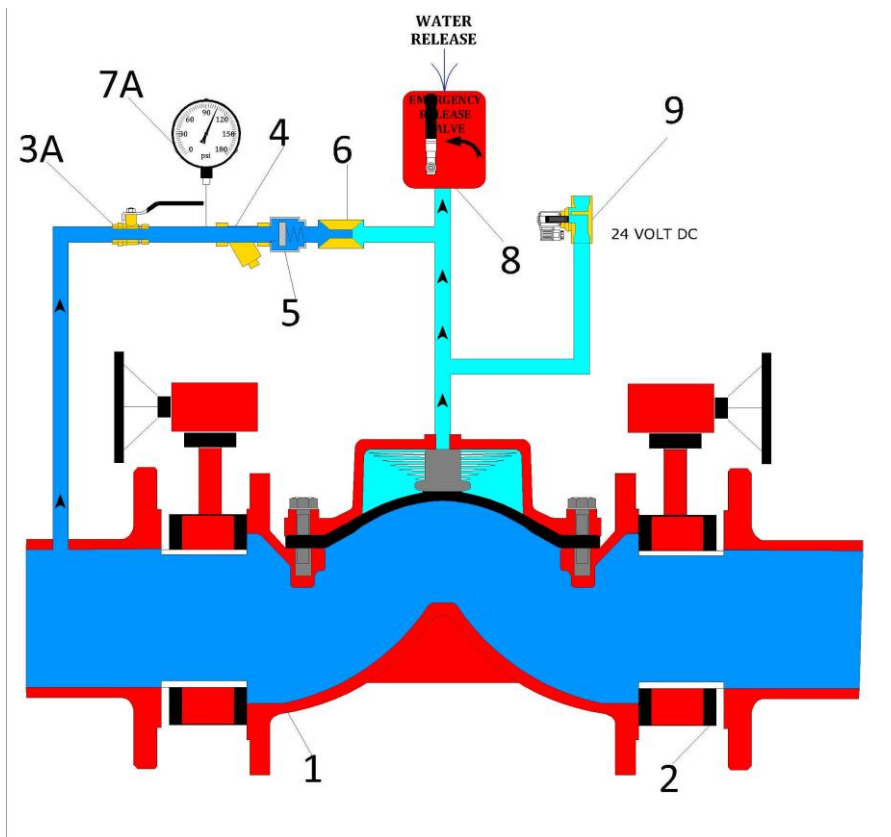
READY



ELECTRIC ACTIVATION

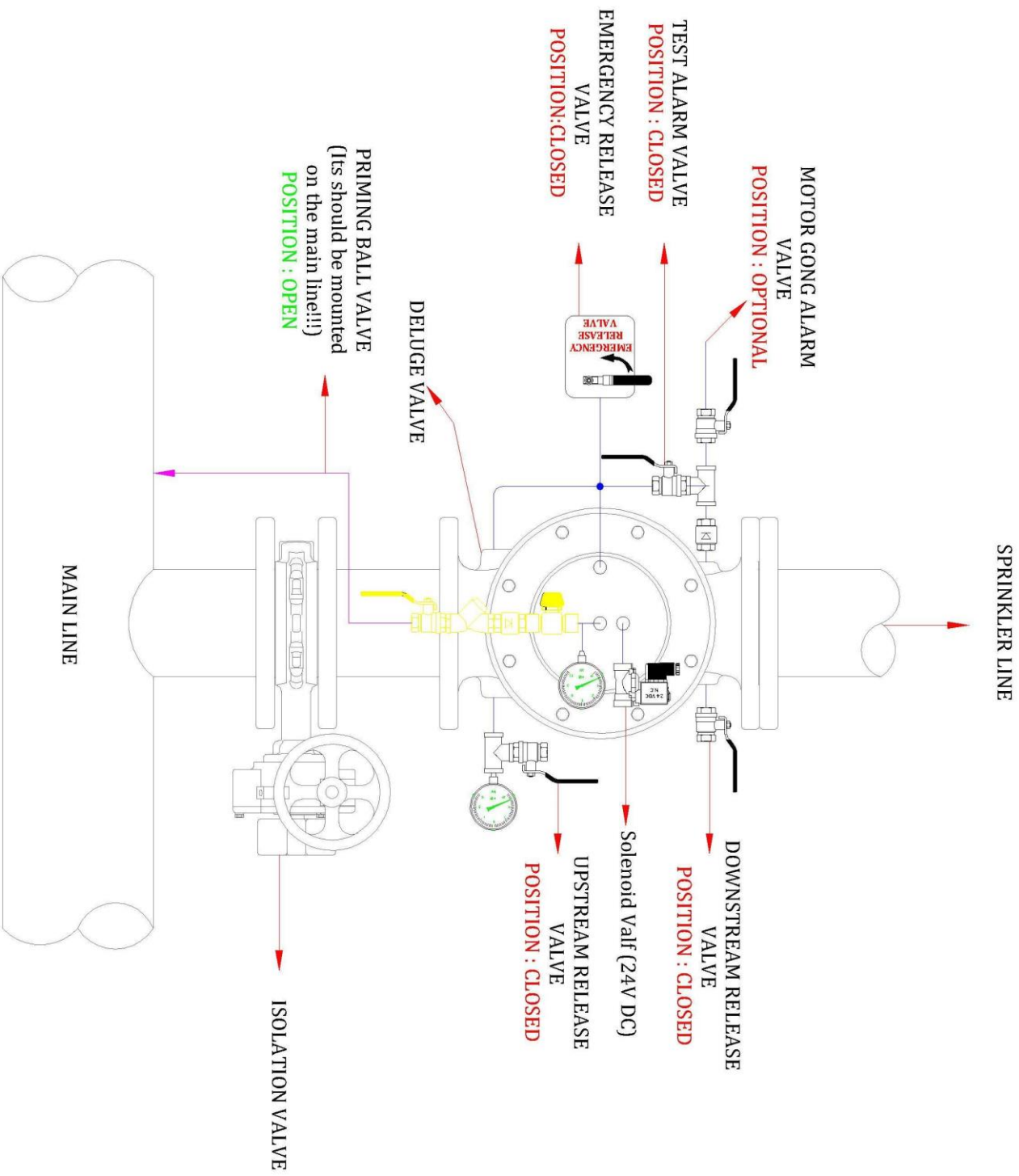


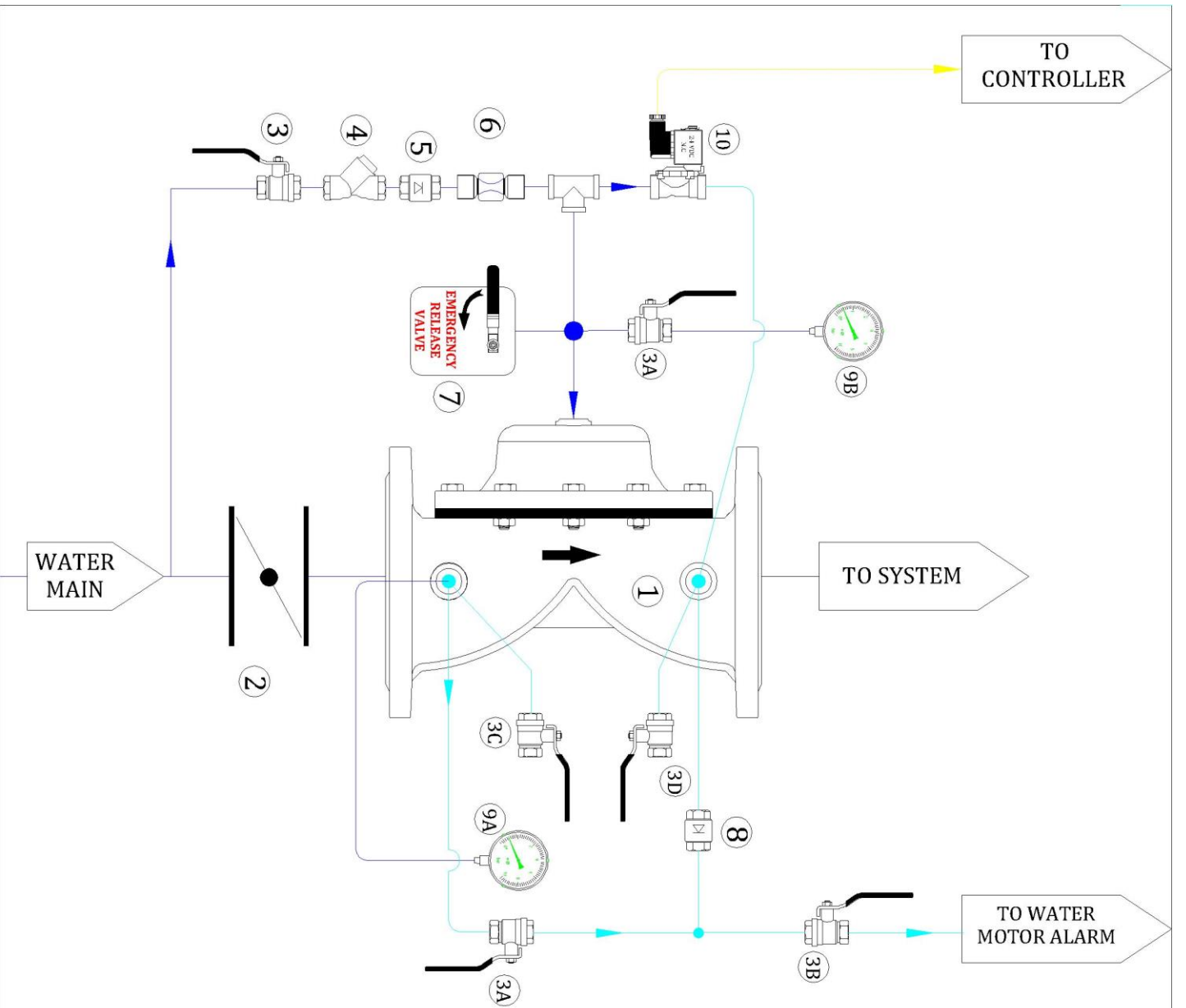
MANUAL ACTIVATION



INSTALLATION


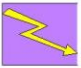
1. The valve should be installed in vertical position while upstream side is at the bottom. Horizontal position is allowed. Sufficient space for maintenance should be left around the valve location.
2. The valve should be positioned in such a way that enables convenient access to the emergency activation valve.
3. Valve [3A] of the control assembly should be connected by a ½" galvanized steel pipe to the main supply pipe, upstream the isolating valve.
4. The solenoid valve [9] should be connected, by appropriate cable, to the electric control source.



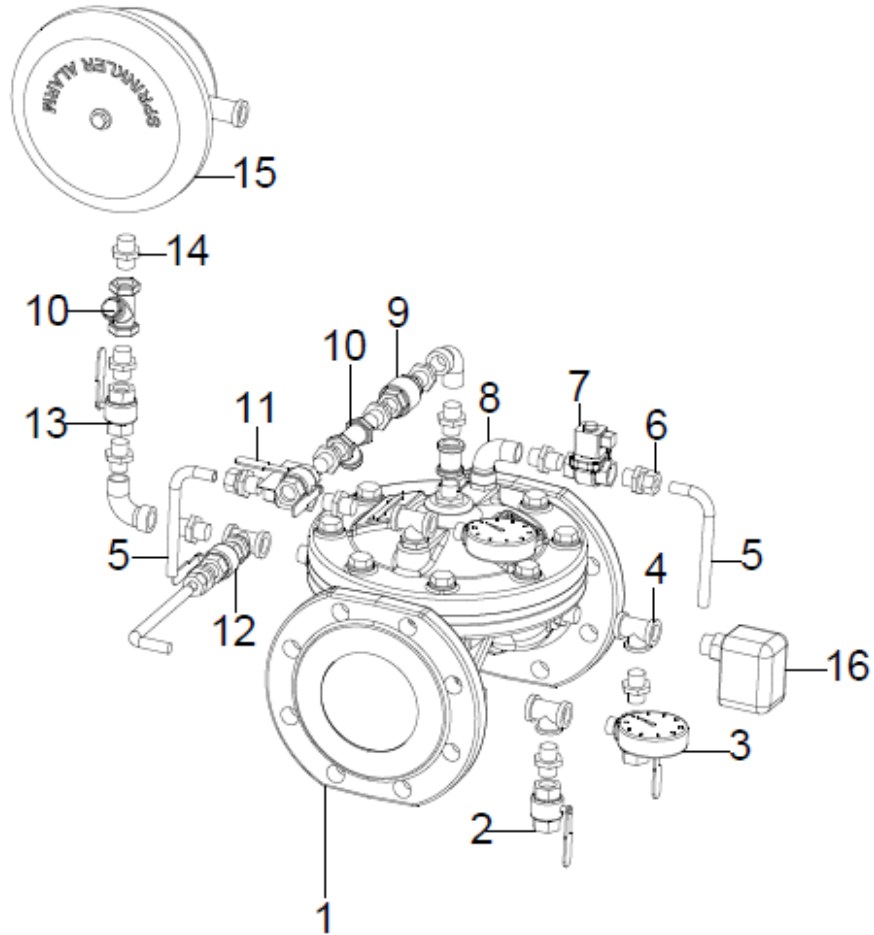


SYSTEM COMPONENTS

- 1. Main Deluge Valve
- 2. Isolation Valve
- 3. Priming Ball Valve
- 3A. Test Alarm Valve
- 3B. Motor Gong Alarm Valve
- 3C. Upstream Release Valve
- 3D. Downstream Release Valve
- 4. Priming Strainer
- 5. Check Valve
- 6. Priming Restriction
- 7. Manual Emergency Release Valve
- 8. Downstream Check Valve
- 9A. Upstream Pressure Gauge
- 9B. Control Chamber Pressure Gauge
- 10. 24 Volt DC Solenoid Pilot Valve (24 Volt DC)

 Hydraulic
 Electric

TRIM SET OF DELUGE VALVE



NO	DESCRIPTION	NO	DESCRIPTION
1	Deluge Valve (G type or D type)	9	½" Spring loaded Check Valve
2	½" Drain Valve	10	½" Strainer
3	Pressure Gauge	11	½" Emergency Release Valve
4	½ " TEE	12	½" Test Valve
5	Copper Drain Pipe	13	½" Isolation Valve
6	¼" Union Nippel	14	½" Nipple
7	Solenoid Valve 24 Volt DC	15	Motor Alarm Gong (Optional)
8	½" Elbow	16	Pressure Switch (Optional)